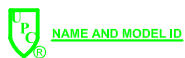


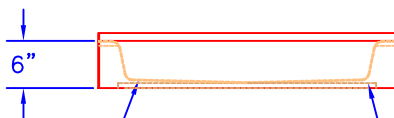
TOP VIEW

1/8" SLOPE TO INSIDE

NON-SKID TEXTURE
BOTTOM SURFACE



1" NAILING FLANGE



FRONT VIEW

1/4" PER FT. SLOPE TO DRAIN

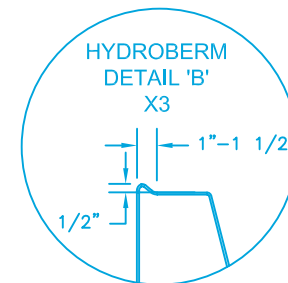
5/8" FIBERBOARD



SIDE VIEW



PHOTOS



- NOTES:
- 1: GEL COAT THICKNESS .020" ±.005.
 - 2: 1ST LAMINATE .125" NOMINAL THICKNESS.
 - 3: REINFORCED 5/8" FIBERBOARD BASE.
 - 4: EXTRA SLOPE BOTTOM TO FACILITATE FULL DRAINAGE OF SLIGHTLY OUT OF PLUMB CONDITION.
 - 5: THE REVEAL (TOP EDGE) WILL ACCOMODATE A FULL MUD SET TILE JOB.

UNIT PART NUMBERS		UNLESS OTHERWISE SPECIFIED TOLERANCES ARE AS FOLLOWS	
RIGHT HAND UNIT	PR48-NEO	DECIMAL: .XX = ±.010 .XXX = ±.005	FRACTIONAL: ±1/4" ANGULAR: ±1/2°
LEFT HAND UNIT	PR48-NEO	CAPACITY/ OPERATING LEVEL:	GAL
		CAPACITY/ OVERFLOW LEVEL:	GAL
		APPROX. UNIT WEIGHT:	LBS
		APPROX. SHIPPING WEIGHT:	LBS

THE INFORMATION CONTAINED IN THIS DRAWING IS THE SOLE PROPERTY OF FIBER CARE BATHS, INC. ANY REPRODUCTION OR UNAUTHORIZED USE IN PART OR AS A WHOLE WITHOUT THE WRITTEN PERMISSION OF FIBER CARE BATHS, INC. IS STRICTLY PROHIBITED. PRODUCT CONFIGURATION, DIMENSIONS, STANDARD ACCESSORIES, MATERIALS COMPOSITION AND CONSTRUCTION ARE SUBJECT TO CHANGE WITHOUT NOTICE.

Fiber Care Baths, Inc.

9832 Yucca Rd.
Adelanto, CA 92301
Phone: 760-246-0019
Fax: 760-246-5189

TITLE				SHOWER PAN, CORNER, NEO ANGLE	
DWN	SIZE	MODEL #	REV		
KAYE	A	PR48-NEO	B		
DATE	SCALE	NTS	PAGE	1 OF 1	
03/29/10					